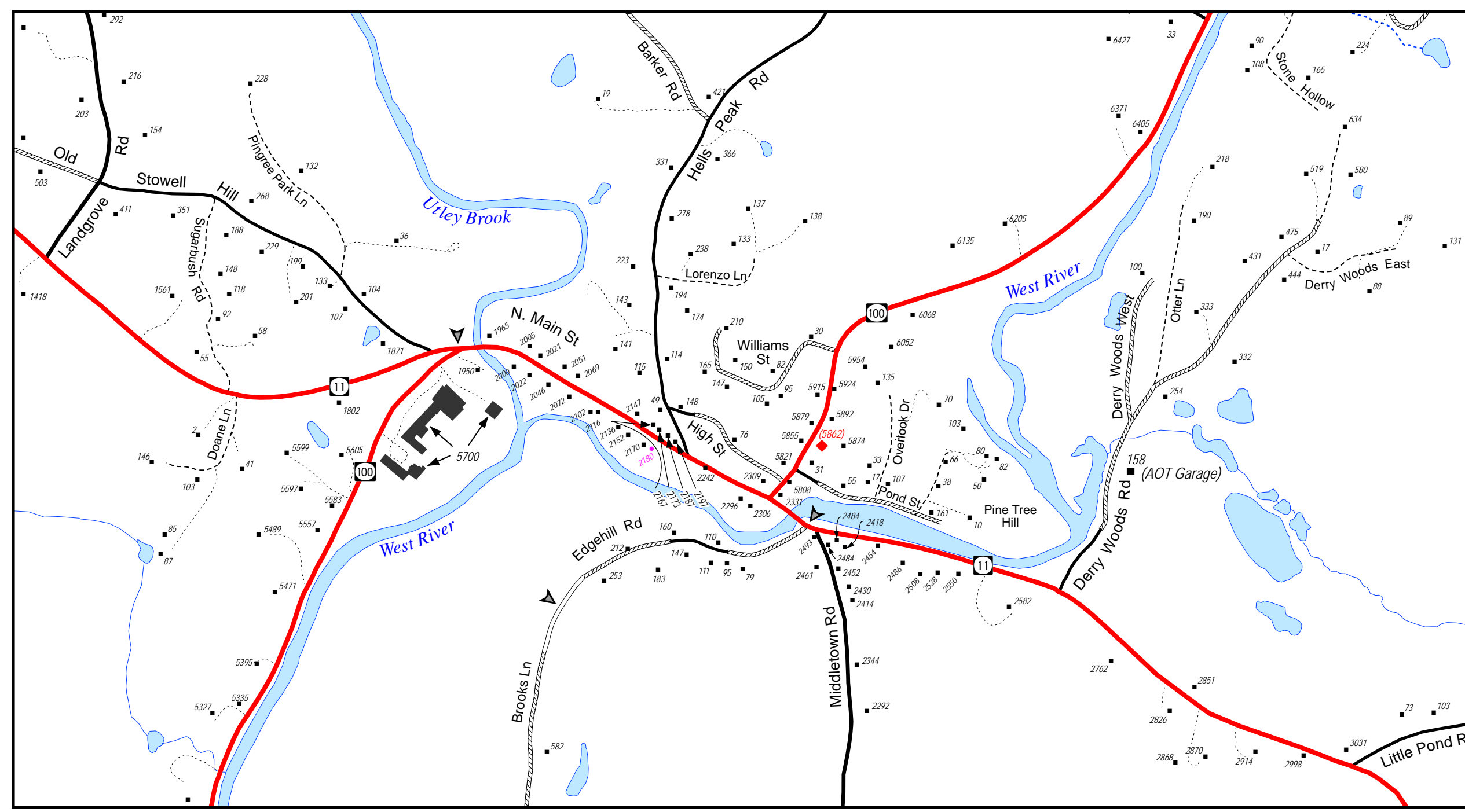


E911 Building Address Map

Town of Londonderry, Vt.

January 2006



Londonderry Village Inset

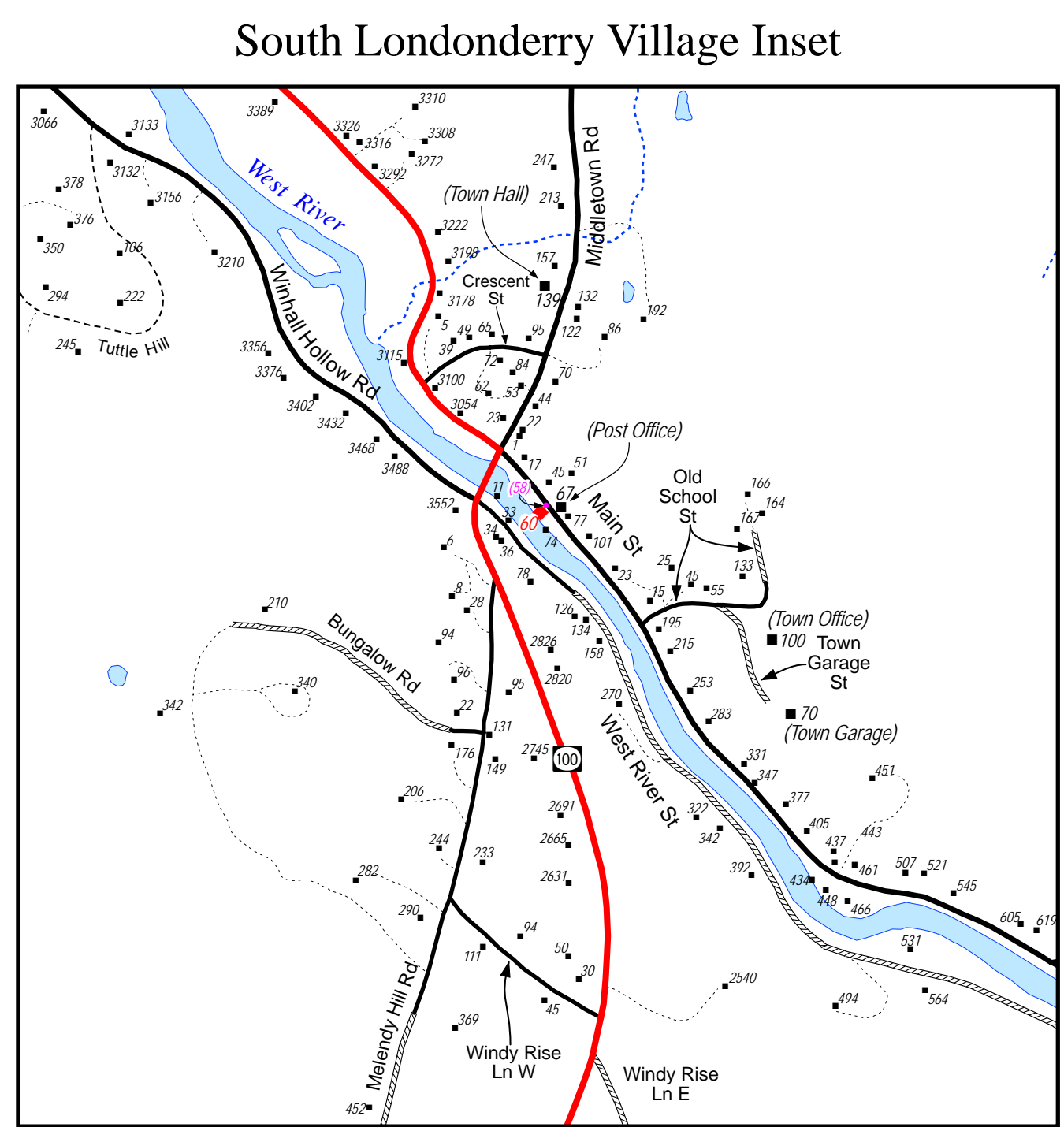
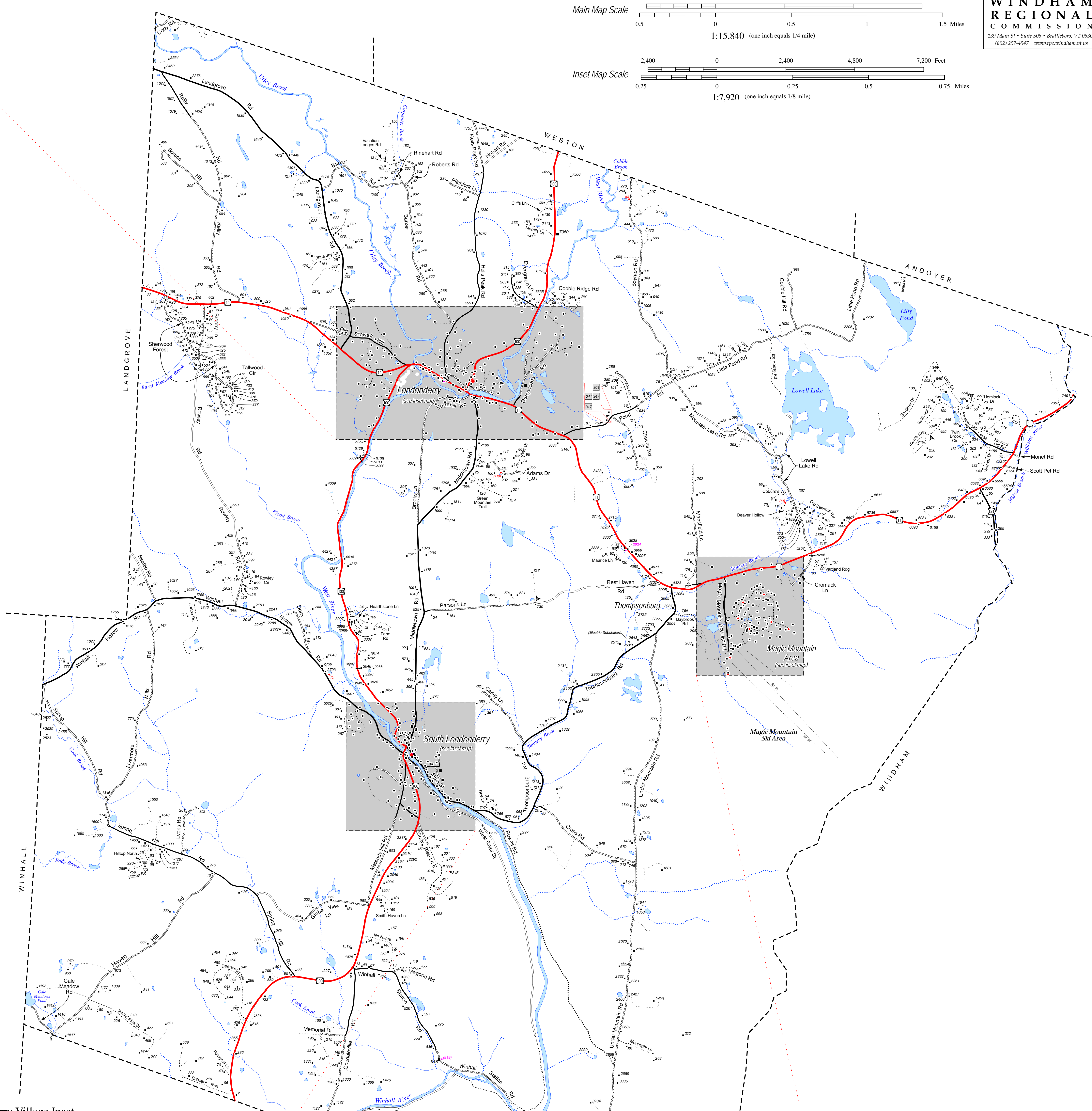
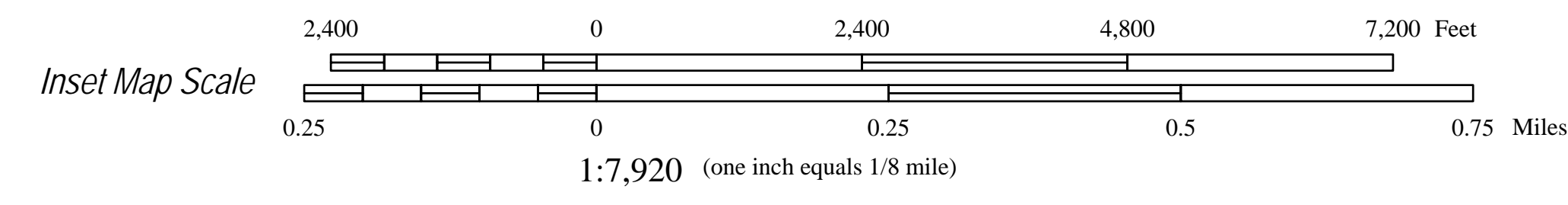
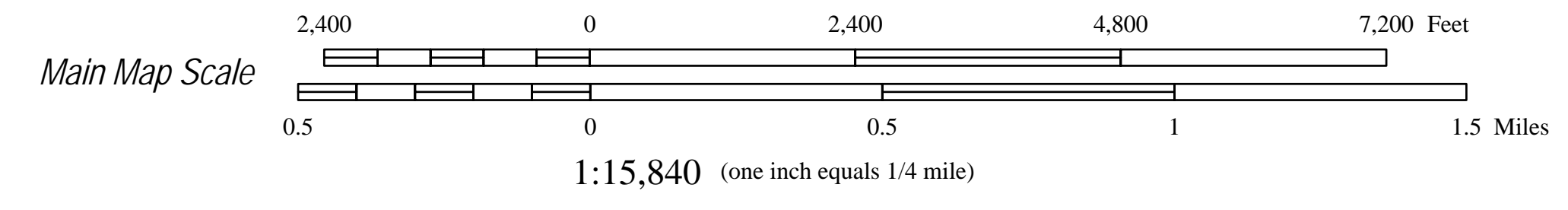
Londonderry Building Use

Category	Total	Percent
RESIDENTIAL		
Single Family	994	74.0%
Multi Family	10	0.7%
Mobile Home	43	3.2%
Seasonal	173	12.9%
Other	5	0.4%
PUBLIC		
Government	8	0.6%
Healthcare	1	0.1%
Church	3	0.2%
Education	3	0.2%
Fire	2	0.1%
Gathering	2	0.1%
COMMERCIAL		
Retail	72	5.4%
Farm	10	0.7%
Lodging	7	0.5%
Industrial	1	0.1%
Other	9	0.7%

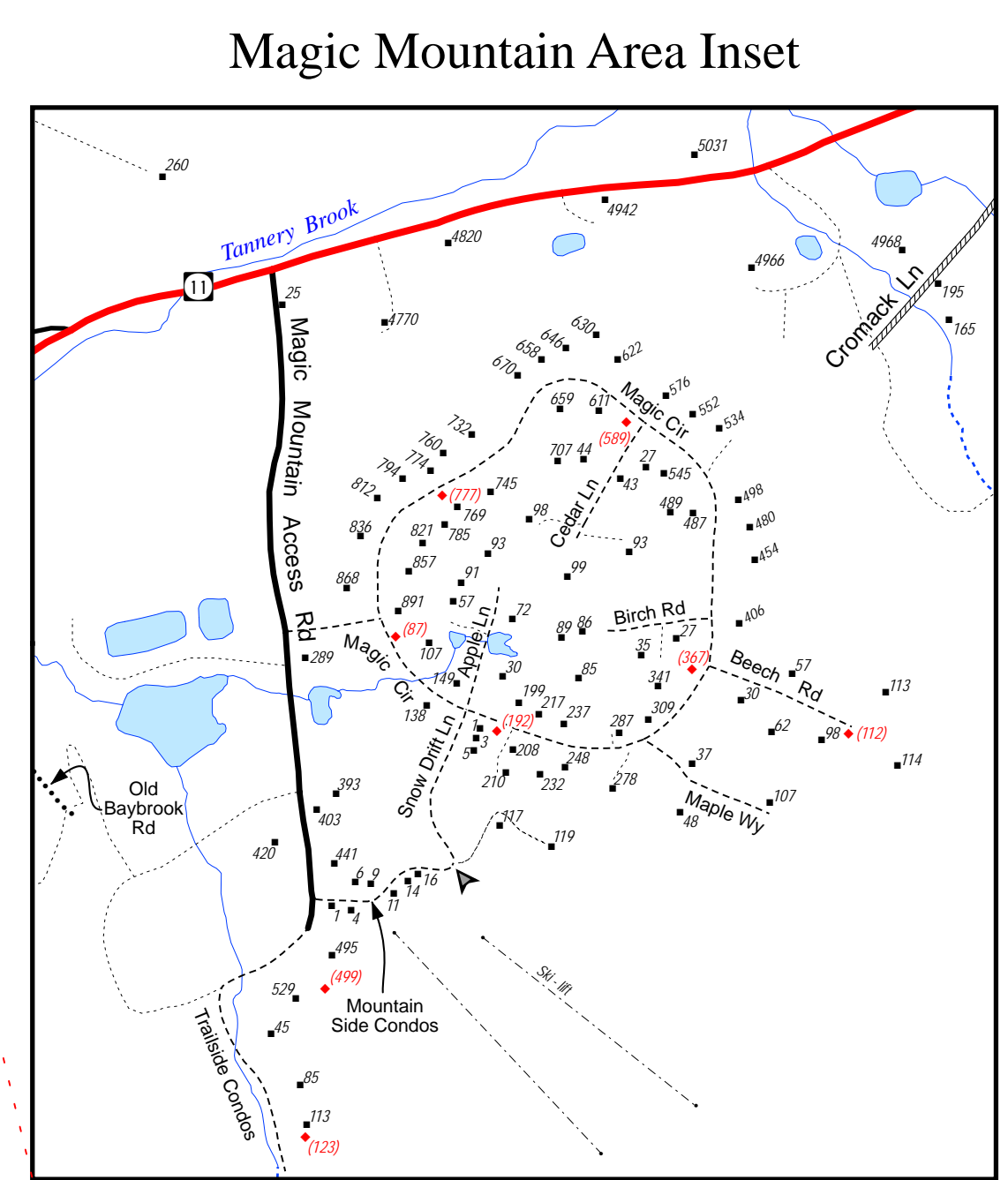
Note: statistics derived from 2005 E911 building type data

- Building
- Fire hydrant
- Public telephone
- Public/government
- Fire Station
- Federal or State Highway
- Class 2 town highway - paved
- Class 3 town highway - paved
- Class 3 town highway - unpaved
- Class 4 town highway - unpaved
- Legal Town Trail
- Private road/drive
- Arrow denotes change in road name
- Town boundary
- River or stream
- Lake or pond

Sources:
 - Town highway locations are from Vt. Agency of Transportation sources (VGIS data layer RDNet) and were developed by digitizing 1989-1-2000 orthophotos and from GPS data collection for Enhanced 911. Data were corrected by WRC GIS staff in 2002 using digital orthophotos and information provided by officials from the Town of Londonderry.
 - Town highway attributes (i.e. class and pavement) are from AOT highway maps. These data were corrected by WRC GIS staff using information provided by officials from the Town of Londonderry.
 - Surface waters are from a Windham Regional Commission shapefile based on the Vermont Hydrography Dataset (VGH) data layer SWatermain.
 - Corrections to the VGH were provided by the Londonderry Conservation Commission after extensive review and field visits. The surface waters data show perennial streams in the Town of Londonderry.
 - Building locations data were taken from the VCEI data layer ESTE. Data was collected using GPS during 1996-1998 as part of the Enhanced 911 data development project. Some updates to building locations have been performed by WRC staff.



South Londonderry Village Inset



Magic Mountain Area Inset