

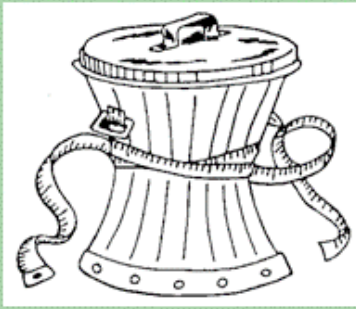
# Londonderry Recycling Center

7060 Route 100

## HOURS OF OPERATION

**Recycling Center:** Monday, Tuesday, Thursday, Friday, & Saturday 10 AM—3 PM

**Transfer Station:** Monday, Tuesday, Thursday, Friday, & Saturday 10AM– 3PM



The following items can be recycled in ONE CONTAINER, and **DO NOT** need to be separated:

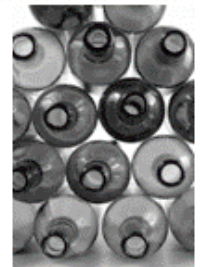
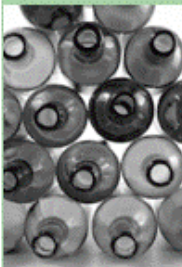
### MIXED PAPER RECYCLING:

Office Paper, Computer Paper, Fax Paper, Telephone Books, Soft Cover Books, Posters, Magazines, White & Colored Paper, Manila Folders, Envelopes, Junk Mail, Chipboard (ie. Cereal boxes/gift boxes), Egg Cartons, Brown Paper Bags, Hardcover Books (remove covers), and School Paper



### MIXED GLASS RECYCLING:

All Colors of Glass Beverage and Food Containers—blue, green, clear, brown (please remove caps), All Porcelain—Toilets and sinks (remove ALL non-porcelain parts ), Pyrex<sup>TM</sup>, Ceramics-coffee mugs, etc., Drinking Glass, Window Panes, & Mirrors



The following items **MUST** be separated:

**CANS:** We accept both aluminum and tin cans. Labels DO NOT need to be removed.

**CARDBOARD:** We accept all corrugated cardboard. Please make sure that all pieces are clean, dry, and flattened.

**NEWSPAPER:** We accept all black & white newspaper. No glossy inserts or staples. Please bag. These are kept separate from all other paper, as they are given to local farmers for livestock bedding.

**PLASTIC CONTAINERS:** We accept only #1 and #2

Plastics for recycling. Please empty, rinse, and remove caps.



**ALUMINUM FOIL:** We accept all flat and clean aluminum foil and pie tins.

**PACKING PEANUTS:** Accepted in bags or boxes.

**STONEFIELD YOGURT CONTAINERS:** ONLY Stonyfield. Please clean.

**PLASTIC SIX PACK RINGS:** We will take all clean, six pack rings.

